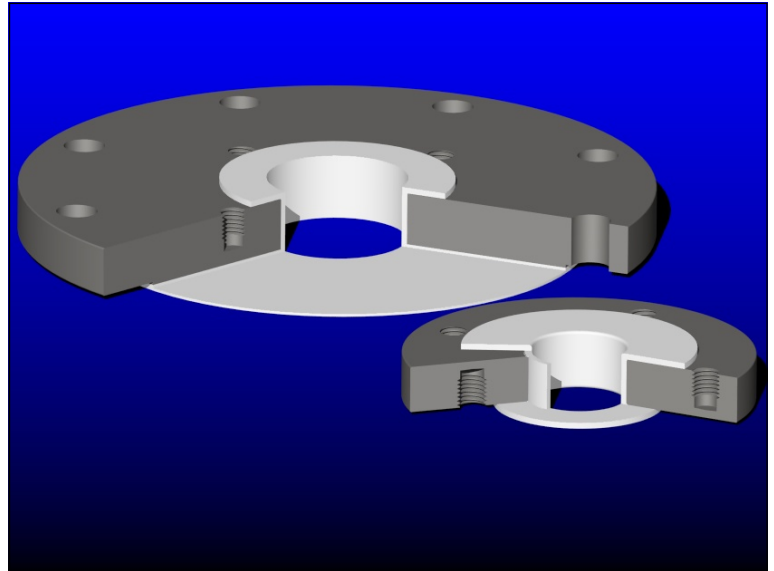




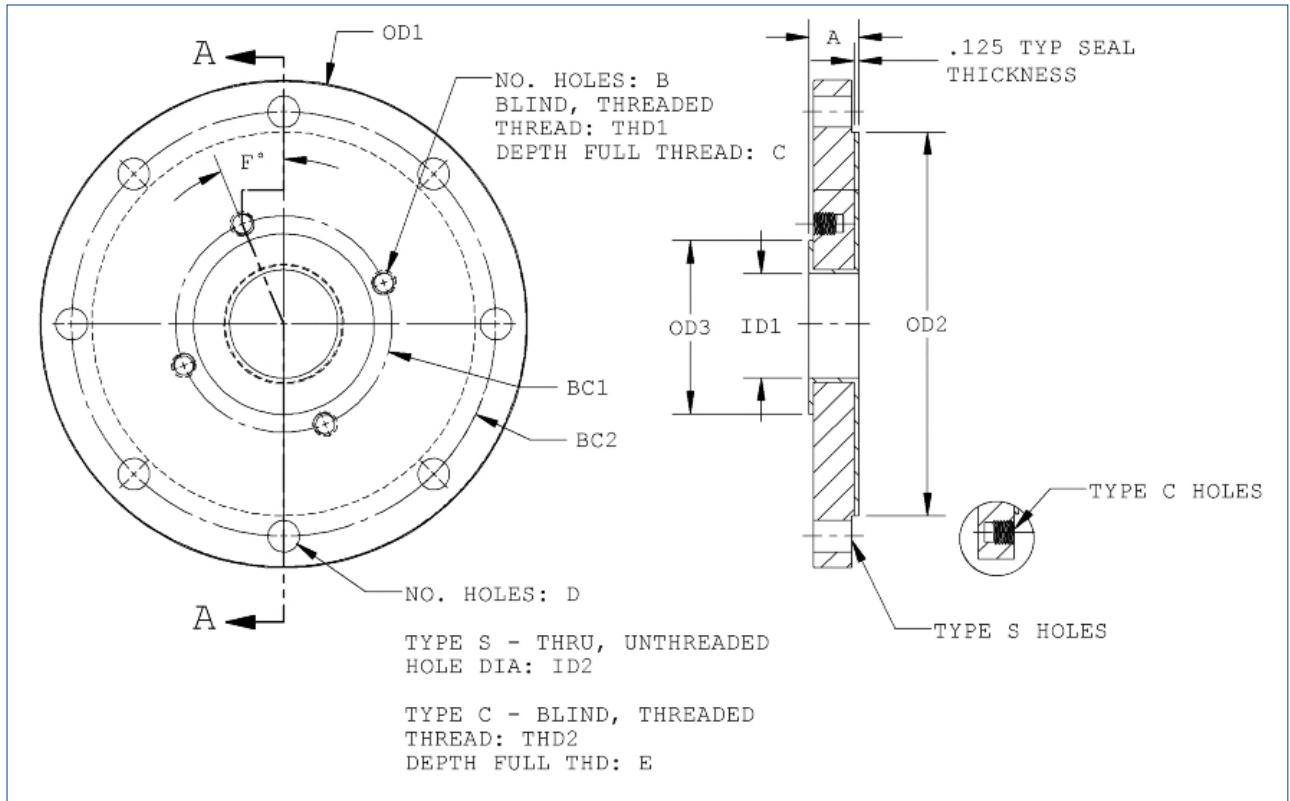
FLUOR-O-FLO® Class 150 PTFE Lined Steel Straight-Bore Reducing Flanges

Perfect for connecting different size flanges or systems, our PTFE lined flanges are compact and sturdy for years of trouble free service.

The larger image is a cut-away of our Type S reducing flanges and the smaller image shows Type C. See next page for dimension table and part numbers.



Product Specifications 7.3-2



7.3-2 Class 150 PTFE Lined Steel Straight-Bore Reducing Flanges Product Specifications

Part Number	Nominal Size	TYPE	A	B	C	BC1	THD1	D	E	BC2	THD2	ID2	OD1	OD2	OD3	ID1	F
LRFS-150-010005	1" x 1/2"	C	1.38	4	1/2	2.38	1/2-13	4	1/2	3.12	1/2-13	—	4.25	1.88	1.26	0.5	45.0
LRFS-150-010007	1" x 3/4"	C	1.38	4	1/2	2.75	1/2-13	4	1/2	3.12	1/2-13	—	4.25	1.88	1.57	0.8	45.0
LRFS-150-015010	1-1/2" x 1"	C	1.38	4	1/2	3.12	1/2-13	4	1/2	3.88	1/2-13	—	5.00	2.69	1.88	1.0	45.0
LRFS-150-020010	2" x 1"	C	1.25	4	1/2	3.12	1/2-13	4	5/8	4.75	5/8-11	—	6.00	3.44	1.88	1.0	45.0
LRFS-150-020005	2" x 1/2"	C	1.25	4	1/2	2.38	1/2-13	4	5/8	4.75	5/8-11	—	6.00	3.44	1.26	0.5	45.0
LRFS-150-025020	2-1/2" x 2"	C	1.25	4	5/8	4.75	5/8-11	4	5/8	5.50	5/8-11	—	7.00	3.94	3.44	2.0	45.0
LRFS-150-030010	3" x 1"	S	1.19	4	1/2	3.12	1/2-13	4	—	6.00	—	0.75	7.50	4.63	1.88	1.0	45.0
LRFS-150-030015	3" x 1-1/2"	C	1.25	4	1/2	3.88	1/2-13	4	5/8	6.00	5/8-11	—	7.50	4.63	2.69	1.5	45.0
LRFS-150-030020	3" x 2"	C	1.25	4	5/8	4.75	5/8-11	4	5/8	6.00	5/8-11	—	7.50	4.63	3.44	2.0	45.0
LRFS-150-030025	3" x 2-1/2"	C	1.25	4	5/8	5.50	5/8-11	4	5/8	6.00	5/8-11	—	7.50	4.63	3.94	2.5	45.0
LRFS-150-040010	4" x 1"	S	1.19	4	1/2	3.12	1/2-13	8	—	7.50	—	0.75	9.00	5.94	1.88	1.0	22.5
LRFS-150-040015	4" x 1-1/2"	S	1.19	4	1/2	3.88	1/2-13	8	—	7.50	—	0.75	9.00	5.94	2.69	1.5	22.5
LRFS-150-040020	4" x 2"	C	1.25	4	5/8	4.75	5/8-11	8	5/8	7.50	5/8-11	—	9.00	5.94	3.44	2.0	22.5
LRFS-150-040030	4" x 3"	C	1.25	4	5/8	6.00	5/8-11	8	5/8	7.50	5/8-11	—	9.00	5.94	4.63	3.0	22.5
LRFS-150-050040	5" x 4"	C	1.50	8	5/8	7.50	5/8-11	8	3/4	8.50	3/4-10	—	10.00	7.06	5.94	4.0	22.5
LRFS-150-060010	6" x 1"	S	1.25	4	1/2	3.12	1/2-13	8	—	9.50	—	0.875	11.00	8.00	1.88	1.0	22.5
LRFS-150-060015	6" x 1-1/2"	S	1.25	4	1/2	3.88	1/2-13	8	—	9.50	—	0.875	11.00	8.00	2.69	1.5	22.5
LRFS-150-060020	6" x 2"	S	1.25	4	5/8	4.75	5/8-11	8	—	9.50	—	0.875	11.00	8.00	3.44	2.0	22.5
LRFS-150-060030	6" x 3"	S	1.25	4	5/8	6.00	5/8-11	8	—	9.50	—	0.875	11.00	8.00	4.63	3.0	22.5
LRFS-150-060040	6" x 4"	C	1.50	8	5/8	7.50	5/8-11	8	3/4	9.50	3/4-10	—	11.00	8.00	5.94	4.0	22.5
LRFS-150-060050	6" x 5"	C	1.50	8	3/4	8.50	3/4-10	8	3/4	9.50	3/4-10	—	11.00	8.00	7.06	5.0	22.5
LRFS-150-080015	8" x 1-1/2"	S	1.37	4	1/2	3.88	1/2-13	8	—	11.75	—	0.875	13.50	10.07	2.69	1.5	22.5
LRFS-150-080020	8" x 2"	S	1.37	4	5/8	4.75	5/8-11	8	—	11.75	—	0.875	13.50	10.07	3.44	2.0	22.5
LRFS-150-080030	8" x 3"	S	1.37	4	5/8	6.00	5/8-11	8	—	11.75	—	0.875	13.50	10.07	4.63	3.0	22.5
LRFS-150-080040	8" x 4"	S	1.37	8	5/8	7.50	5/8-11	8	—	11.75	—	0.875	13.50	10.07	5.94	4.0	22.5
LRFS-150-080060	8" x 6"	C	1.50	8	3/4	9.50	3/4-10	8	3/4	11.75	3/4-10	—	13.50	10.07	8.00	6.0	22.5
LRFS-150-100040	10" x 4"	S	1.44	8	5/8	7.50	5/8-11	12	—	14.25	—	1	16.00	12.25	5.94	4.0	7.5
LRFS-150-100060	10" x 6"	S	1.44	8	3/4	9.50	3/4-10	12	—	14.25	—	1	16.00	12.25	8.00	6.0	7.5
LRFS-150-100080	10" x 8"	C	1.63	8	3/4	11.75	3/4-10	12	7/8	14.25	7/8-9	—	16.00	12.25	10.07	8.0	7.5
LRFS-150-120060	12" x 6"	S	1.50	8	3/4	9.50	3/4-10	12	—	17.00	—	1	19.00	14.50	8.00	6.0	7.5
LRFS-150-120080	12" x 8"	S	1.50	8	3/4	11.75	3/4-10	12	—	17.00	—	1	19.00	14.50	10.07	8.0	7.5
LRFS-150-120100	12" x 10"	C	1.75	12	7/8	14.25	7/8-9	12	7/8	17.00	7/8-9	—	19.00	14.50	12.25	10.0	15.0
LRFS-150-140080	14" x 8"	S	1.63	8	3/4	11.75	3/4-10	12	—	18.75	—	1.125	21.00	15.75	10.07	8.0	7.5

