

PTFE Gaskets

Envelope & Solid • Donut
Style 1, 2, 3 • Sanitary



CONTENTS

PAGE

Gaskets

• Sizes of PTFE Gaskets	2
• Slit Envelope Gaskets.....	3
• Machined Envelope Gaskets	3
• Double Jacketed Envelope Gaskets.....	3
• PTFE Envelopes with No Fillers.....	3
• Formed Shield Envelope Gaskets - Round or Oval.....	4
• Donut Adapter Gaskets	4
• Style 1, 2, or 3 Gaskets	4
• QVF Gaskets	4
• Quick-Connect Coupling Gaskets	5
• Solid PTFE Gaskets-Ring and Full Face	5
• Tri-Clamp and Other PTFE Sanitary Gaskets.....	5

Call today for our
PTFE Gaskets
Sales Bulletin

All sales are subject to separately published Terms and Conditions of Sale.

Sizes of MICROMOLD

Class 150 and 300 PTFE Gaskets

ID			OD & Bolt Holes									
Class 150 & 300			Class 150					Class 300				
Pipe Size	Old Std.	New Std.	Ring Type OD	Full-Face OD	Bolt Holes			Ring Type OD	Full-Face OD	Bolt Holes		
					No.	Dia.	Bolt Circle			No.	Dia.	Bolt Circle
1/2"	1/2"	27/32"	1-7/8"	3-1/2"	4	5/8"	2-3/8"	2-1/8"	3-3/4"	4	5/8"	2-5/8"
3/4"	3/4"	1-1/16"	2-1/4"	3-7/8"	4	5/8"	2-3/4"	2-5/8"	4-5/8"	4	3/4"	3-1/4"
1"	1"	1-5/16"	2-1/2"	4-1/4"	4	5/8"	3-1/8"	2-7/8"	4-7/8"	4	3/4"	3-1/2"
1-1/4"	1-1/4"	1-21/32"	3"	4-5/8"	4	5/8"	3-1/2"	3-1/4"	5-1/4"	4	3/4"	3-7/8"
1-1/2"	1-1/2"	1-29/32"	3-1/4"	5"	4	5/8"	3-7/8"	3-3/4"	6-1/8"	4	7/8"	4-1/2"
2"	2"	2-3/8"	4"	6"	4	3/4"	4-3/4"	4-3/8"	6-1/2"	8	3/4"	5"
2-1/2"	2-1/2"	2-7/8"	4-7/8"	7"	4	3/4"	5-1/2"	5-1/8"	7-1/2"	8	7/8"	5-7/8"
3"	3"	3-1/2"	5-1/4"	7-1/2"	4	3/4"	6"	5-7/8"	8-1/4"	8	7/8"	6-5/8"
4"	4"	4-1/2"	6-1/2"	9"	8	3/4"	7-1/2"	7-1/8"	10"	8	7/8"	7-7/8"
5"	5"	5-9/16"	7-1/2"	10"	8	7/8"	8-1/2"	8-1/2"	11"	8	7/8"	9-1/4"
6"	6"	6-5/8"	8-1/2"	11"	8	7/8"	9-1/2"	9-7/8"	12-1/2"	12	7/8"	10-5/8"
8"	8"	8-5/8"	10-1/2"	13-1/2"	8	7/8"	11-3/4"	12-1/8"	15"	12	1"	13"
10"	10"	10-3/4"	13"	16"	12	1"	14-1/4"	14-1/4"	17-1/2"	16	1-1/8"	15-1/4"
12"	12"	12-3/4"	16"	19"	12	1"	17"	16-5/8"	20-1/2"	16	1-1/4"	17-3/4"
14"	14"	14"	17"	21"	12	1-1/8"	18-3/4"	19-1/8"	23"	20	1-1/4"	20-1/4"
16"	16"	16"	19"	23-1/2"	16	1-1/8"	21-1/4"	21-1/4"	25-1/2"	20	1-3/8"	22-1/2"
18"	18"	18"	21"	25"	16	1-1/4"	22-3/4"	23-1/2"	28"	24	1-3/8"	24-3/4"
20"	20"	20"	23"	27-1/2"	20	1-1/4"	25"	25-5/8"	30-1/2"	24	1-3/8"	27"
24"	24"	24"	27"	32"	20	1-3/8"	29-1/2"	30-3/8"	36"	24	1-5/8"	32"

Fillers: Common fillers used in Micromold PTFE Envelope Gaskets

CNA Compressed non-asbestos sheet (physical properties conform to ASTM F104 Class P-1141-A)

NA Compressible non-asbestos sheet

CLT CNA core faced on both sides with NA

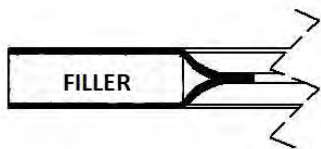
CRT Corrugated cold rolled (or stainless) steel core faced on both sides with NA

NEO Neoprene rubber



Slit Envelope Gaskets

(See Page 2 for Gasket Sizes)



- Available in standard sizes from 1/2" through 18"
- Class 150 ring gasket standard
- Full face gaskets and Class 300 sizes also available

Standard Fillers

- CNA
- NA
- NEO
- CLT
- CRT (cold rolled or stainless steel)
- Others (e.g., Silicone, Viton, EPDM, etc.) available

Machined Envelope Gaskets

(See Page 2 for Gasket Sizes)

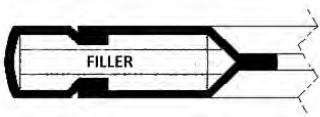


- Available in standard sizes from 1/2" through 18"
- Class 150 ring gasket standard
- Full face gaskets and Class 300 sizes also available

Standard Fillers

- CNA
- NA
- NEO
- CLT
- CRT (cold rolled or stainless steel)
- Others (e.g., Silicone, Viton, EPDM, etc.) available

Double Jacketed Envelope Gaskets (ID Jacket Slit, OD Jacket Machined)



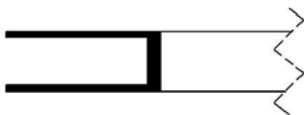
- Available in standard sizes from 1/2" through 18"
- Class 150 ring gasket standard
- Class 300 sizes also available

Standard Fillers

- NA
- NEO
- CLT

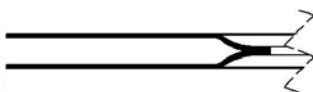
Contact Factory for information on other filler materials and Sodium Etching services.

PTFE Envelopes with No Fillers

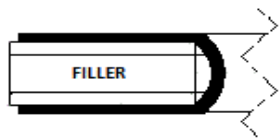


- Class 150 ring type gasket standard
- 300 class sizes also available

Contact Factory for information on special sizes or materials.



Formed Shield Envelope Gaskets - Round or Oval



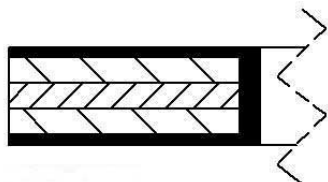
Contact factory for informations on special sizes or materials

Standard Fillers

- CNA
- NA
- NEO
- CLT
- CRT (cold rolled or stainless steel)
- Others (e.g., Silicone, Viton, EPDM, etc.) available

Teflon coverage limited to 1-3/4" maximum; filler extends to OD.

Donut Adapter Gaskets



Standard Configuration - Machined envelope with filler of 1/8" mild steel between two layers of 1/16" NA.

Other Fillers

- Type 304 stainless steel in place of mild steel . . . Contact Factory.

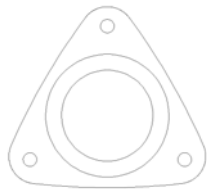
Style 1, 2, or 3 Gaskets With PTFE Machined Envelope

Contact factory for information on special sizes or materials

Standard Filler

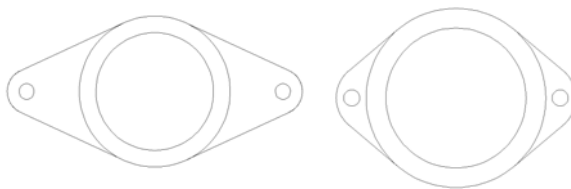
- NA
- Other fillers available

Style 1



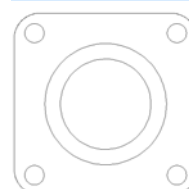
Sizes 1" to 3"

Style 2



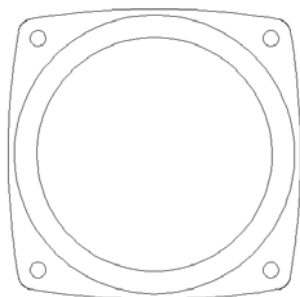
Sizes 1" to 6"

Style 3



Sizes 1" to 3"

QVF Gaskets



Machined envelope

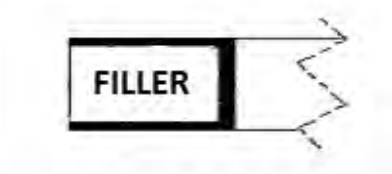
Contact factory for information on special sizes or materials.

Standard Fillers

- CNA
- NA
- NEO
- Others (e.g., Silicone, Viton, EPDM, etc.) available



Quick Connect Coupling Gaskets



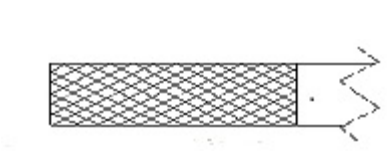
PTFE Machined envelope

Standard Fillers

- NEO: Neoprene rubber
- Others (e.g., Silicone, Viton, EPDM, etc) available

Solid PTFE Gaskets - Ring and Full Face

(See Page 2 for Gasket Sizes)

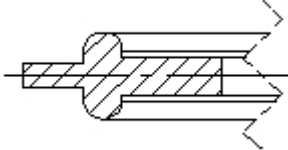


- Class 150 Virgin PTFE Ring Gasket standard
- Also available
 - Class 300 class sizes
 - Full Face Gaskets
 - 25% Glass filled PTFE

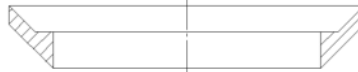
Contact factory for information on special sizes or materials.

Tri-Clamp and Other PTFE Sanitary Gaskets

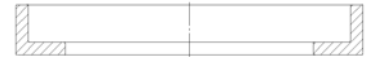
Tri-Clamp



Bevel Seat



John Perry



I-Line



Davis

