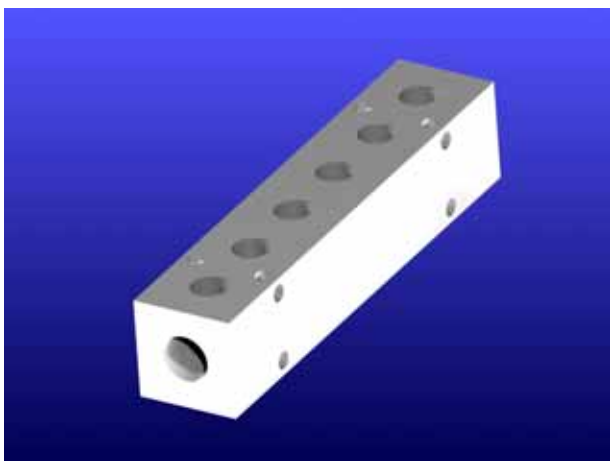


## FLUOR-O-FLO™ PTFE Manifolds



<b>Material:</b>	PTFE
<b>No. of Outlets:</b>	2 through 10 are standard, others available on special order.
<b>Inlet NPT Pipe Size:</b>	1/4", 3/8", and 1/2"
<b>Outlet NPT Pipe Size:</b>	1/8", 1/4", and 3/8"
<b>Overall Size:</b>	1-3/4" x 1" x 1" through 10-3/4" x 1-1/2" x 1-1/2"

### • Space Efficiency & Neatness

PTFE Manifolds reduce the number of cumbersome and bulky connections and help you tackle your space problems with ease. Lessen design and fabrication problems in process equipment, as well as in laboratory environments—anywhere highly corrosive fluids need to be controlled.

### • Cost & Energy Savings

Since they shorten and condense flow paths, you can expect a reduction in pressure drop as well as more easily balanced flow conditions. This reduction in complexity and number of connections not only reduces initial costs, it can also reduce leaks and maintenance costs down the road.

### • Custom Sizes & Configurations

Manifolds can be custom-made to suit your design constraints. If you would like assistance in determining what manifold configurations are possible, please contact us.

---

Call today for our  
FLUOR-O-FLO™ PTFE  
Manifolds Product Specifications